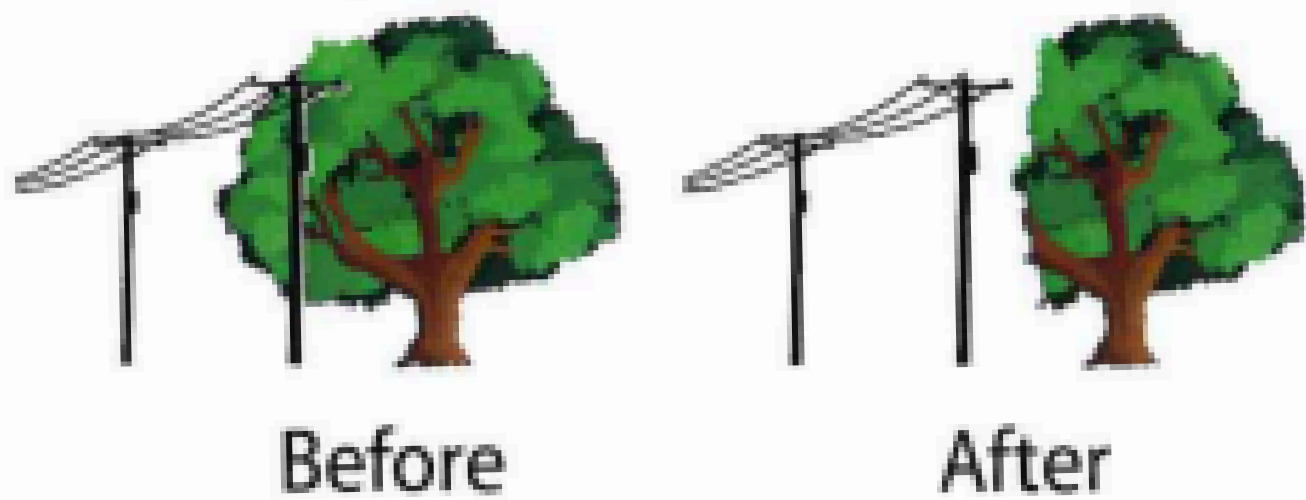


How Will The Trees Be Trimmed?

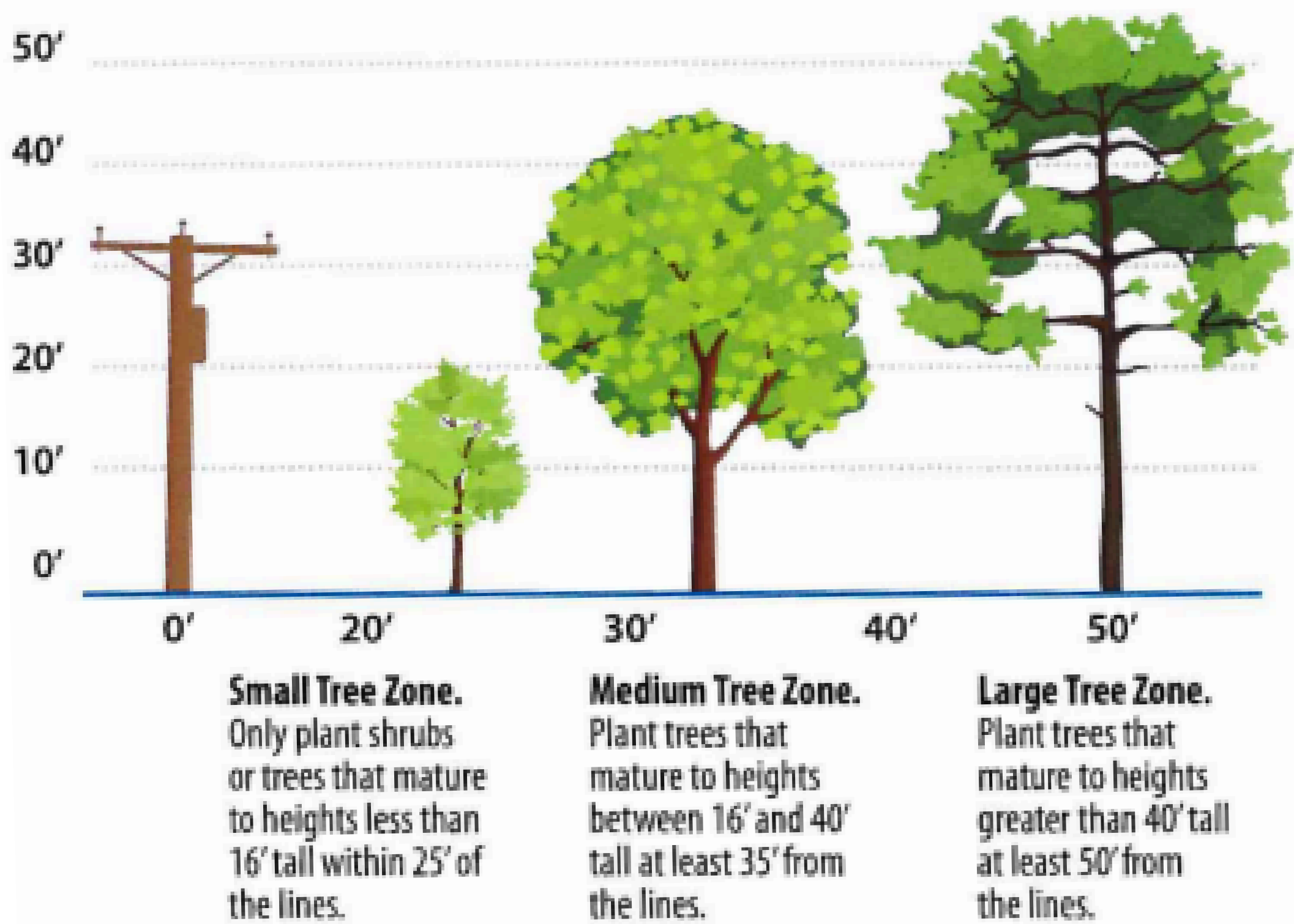
To protect the health of the tree, we employ lateral and directional pruning methods endorsed by tree care professionals. The basis for proper pruning is that each limb removed from a tree is removed either where it joins another limb or at the trunk.

Side Trimming



Plan Before You Plant.

Before you plant a tree, palm or shrub, please make sure the location is out of the way of overhead power lines and away from underground power lines and other utilities. Call 811 before you dig.



When choosing a tree or shrub for your yard, make sure it has room to grow!